

NJ Aquatic Invasive Species Management Plan

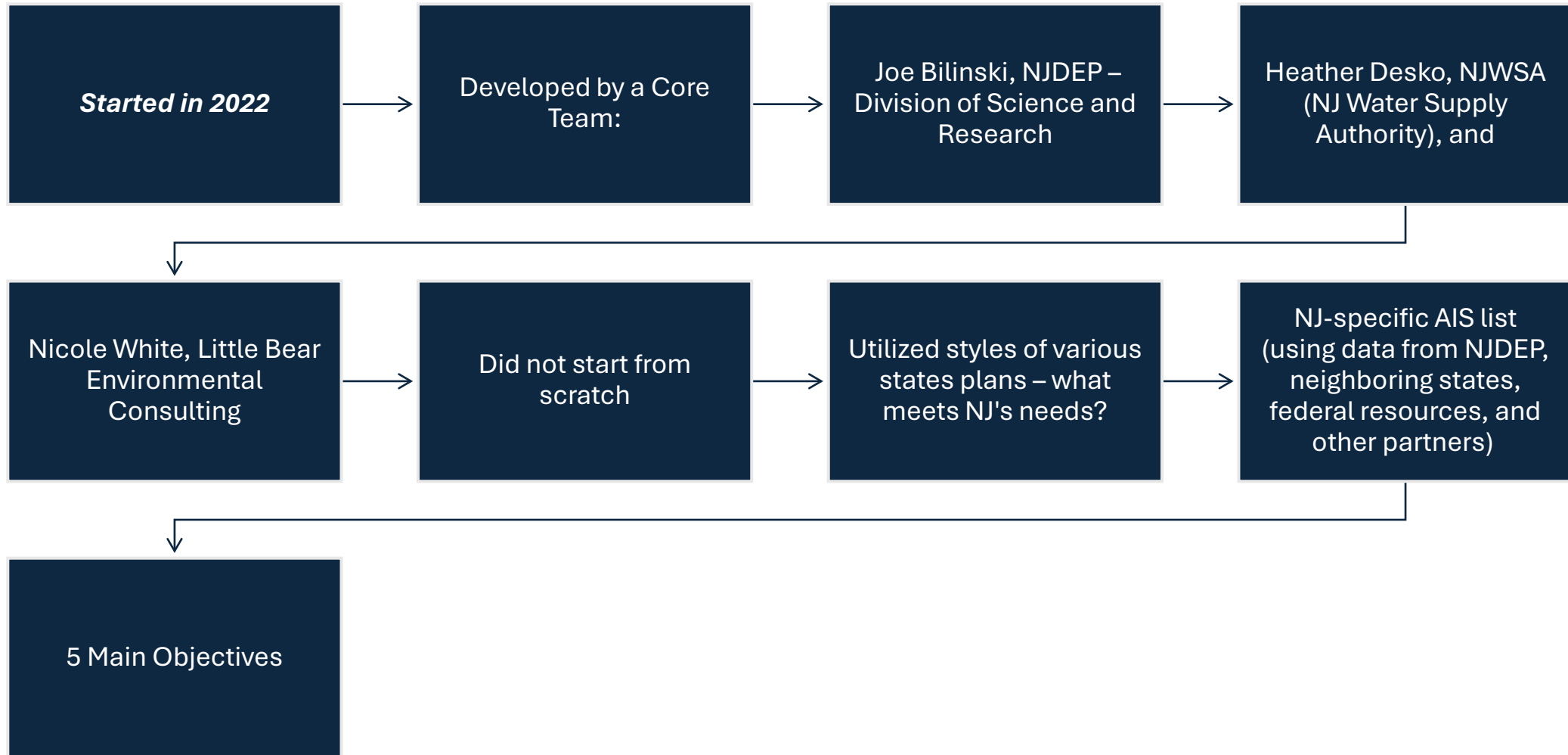
Chris Smith

NJDEP Fish and Wildlife

Bureau of Freshwater Fisheries



NJ AISMP – Development



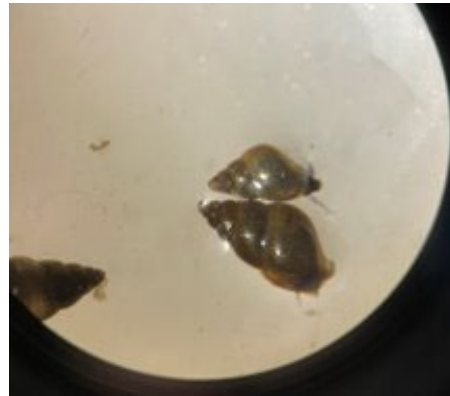
New Jersey AISMP Timeline

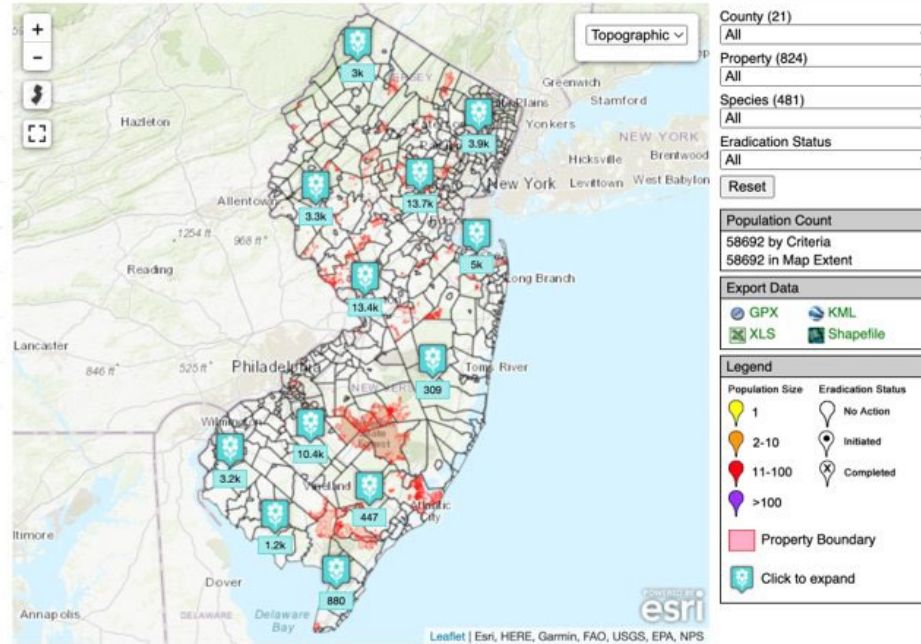




NJ AISMP Goals

- Identify technical, enforcement, and financial assistance required to reduce the environmental, public health, and safety risks associated with AIS.
- Identify new and emerging threats and focus limited resources on appropriate projects and areas.
- Provides a framework to be used by the NJDEP as the lead agency in cooperation with a series of working groups and collaborative organizations.





Taxa	Count
Fishes	39
Mollusks	27
Reptiles	1
Invertebrates	54
Pathogens	3
Birds	1
Plants	50
Algae	8
Mammals	1
Total (NJ)*	184

AIS List - Data Compilation

- NJDEP
- FoHVOS - NJISST
- EDDMapS
- USGS NAS Database
- Neighboring States (NY, PA, DE)

AIS Management Efforts

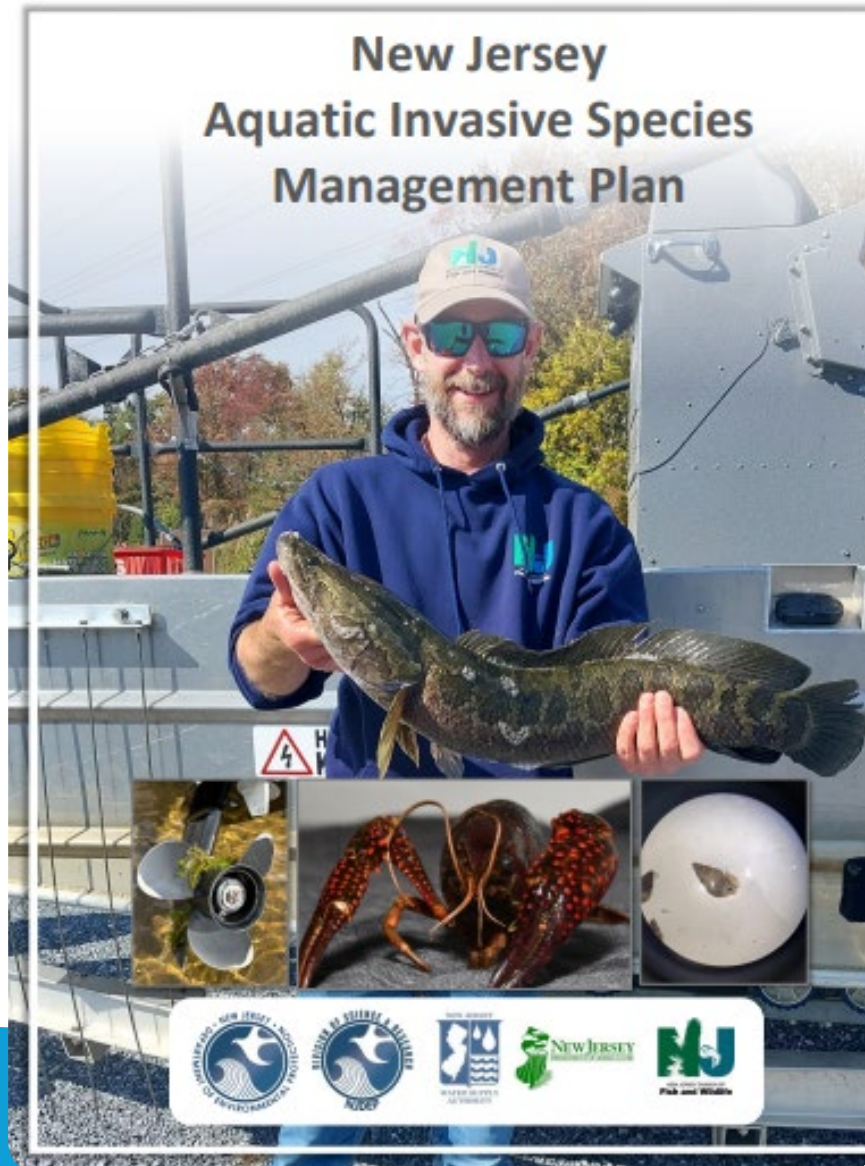
Examples:

- Monitoring, distribution, and abundance surveys (e.g., physical sampling, eDNA collection)
- Targeted eradication (e.g., silty pond mussel, Asian Swamp Eel, Northern Snakehead)

Issue/Problem:

- Limited regulation (NJ Fish code lists “potentially dangerous species”)
- State and Federal
- Limited coordination or support
- Limited funding
- No dedicated staff
- No statewide database, mapping, or reporting requirements





Plan Objectives

1. Oversight & Coordination
2. Prevention
3. Surveillance & Early Detection
4. Response & Restoration
5. Long-term Control & Evaluation

NJ AISMP Work Group Organizations

NJDEP - Div. of Science & Research	NJDEP - Fish & Wildlife	NJ Water Supply Authority	NJDEP – State Park Service	NJDEP – Natural Heritage Program	NJDEP – Div. of Water Monitoring & Standards
NJ Department of Agriculture	NJ Pinelands Commission	NJ Sea Grant Consortium	Rutgers University	Montclair State University	Stockton University
Rowan University	Jacques Cousteau NERR	US Fish & Wildlife Service	Friends of Hopewell Valley Open Space / NJISST	NJ Conservation Foundation	NJ Coalition of Lake Associations
	Lake Hopatcong Foundation	Musconetcong Watershed Association	Raritan Headwaters Association	Trout Unlimited	

15 Critical Action Items Identified Year-One Implementation



Create AIS Coordinator Position within NJDEP.



Establish Statewide AIS database manager position within NJDEP.



Establish iMapInvasives as the state-wide standard for AIS reporting and database in New Jersey.



Establish funding pathway for long-term implementation.



Partner with neighboring states and other entities to coordinate cross-jurisdictional goals.



Establish specialized working groups (e.g., Prioritization WG, Ed & Outreach WG, etc.).



Create and provide a reporting platform statewide for the public.

NJAIS Plan Implementation

USFWS, ANS Task
Force Funding 2025
(Approximately - 90k)

Approval for FTE, AIS
Coordinator Position
within NJDEP Fish
and Wildlife.

Prioritize Goals and
Action Items

iMapInvasives


Invasive Species Resources

INVASIVE SPECIES RESOURCES

Information regarding the invasive species that have been found in New Jersey, contact information, and how you can help.

LEARN MORE

[Home](#) [Invasive Species](#) [Management Plans](#) [How can I help?](#) [Additional Resources](#) [Contact Us](#)



Invasive Species Resources

Information about invasive species that have been found in New Jersey, contact info, and how you can help

What are invasive species?

Invasive Species are organisms that are not native to a particular ecosystem but can reproduce quickly and outcompete native species once established. They can be:

- Plants
- Animals
- Fungi
- Algae
- Pathogens

Invasive species can pose significant threats to human health, agricultural resources, and the environment. Introductions to new areas can occur accidentally or intentionally through human actions. **All ecosystems**, whether aquatic, marine, or terrestrial, **can be affected by invasive species**.

Many invasive species are very common and widespread. They can be found in most of our urban, suburban, and rustic landscapes. Unfortunately, we encounter invasive species every day. It is common to see them:

- growing in our lawns and gardens (e.g., dandelions – *Taraxacum officinale* and white clover – *Trifolium repens*),

Invasive Species in the News

[USDA asks public to look out for Spotted Lantern Fly egg masses](#) (March 2024)

[NJ pushes for native plant comeback to combat invasive species](#) (February 2024)

[Link: NJDEP| Invasive Species | Aquatic Invasive Species Management Plan](#)

Thank You

- Core Team:
- Joseph Bilinski (NJDEP)
- Heather Desko (NJWSA)
- Nicole White (Little Bear Environmental Consulting)

Chris Smith
NJDEP Fish and Wildlife
Bureau of Freshwater Fisheries
Christopher.Smith@dep.nj.gov

